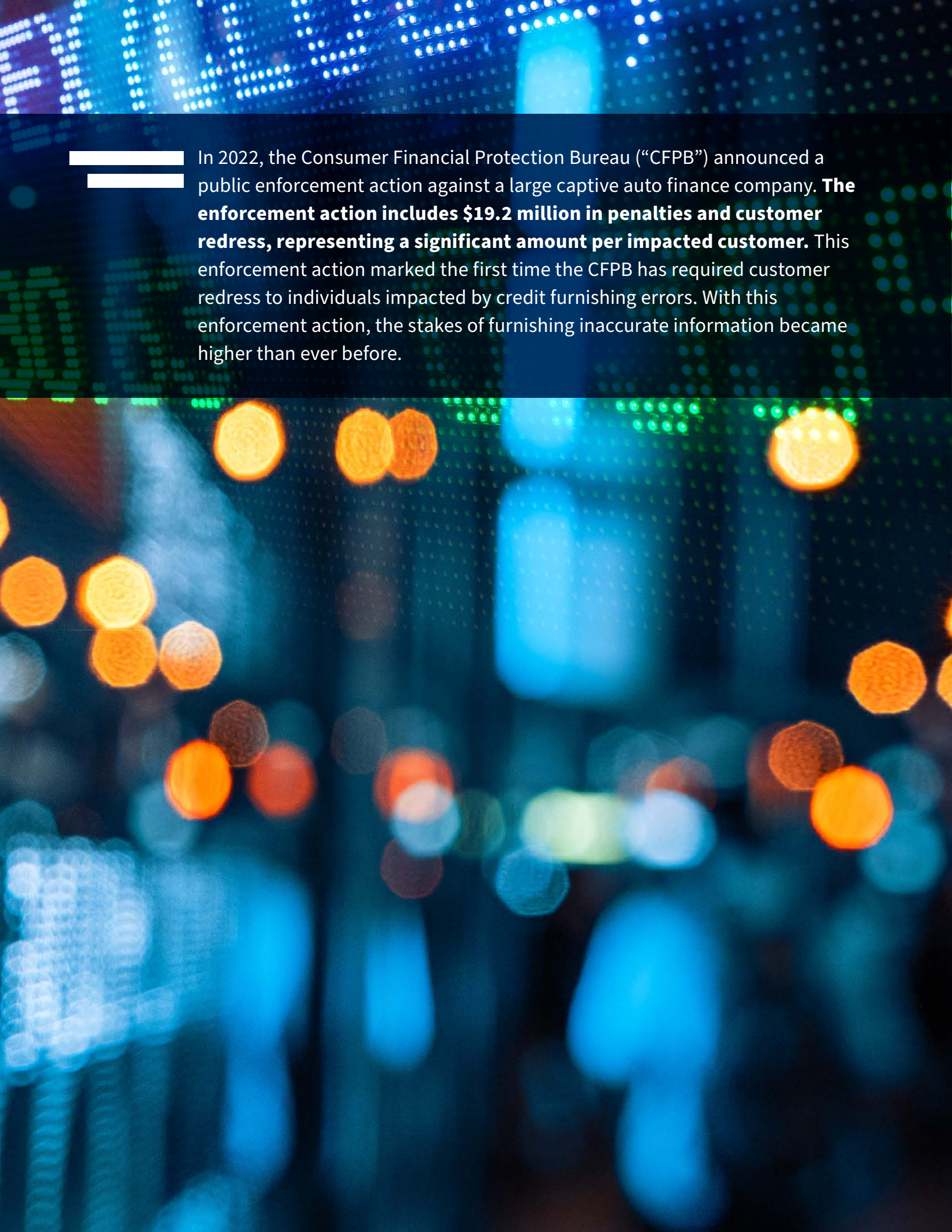




Credit Reporting Considerations

CONSUMER FINANCIAL SERVICES

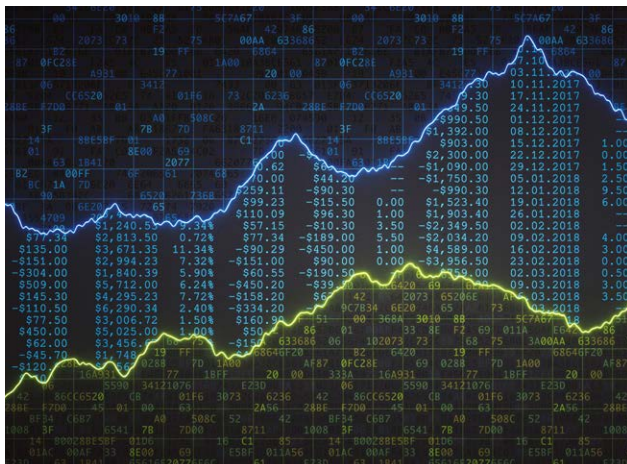


In 2022, the Consumer Financial Protection Bureau (“CFPB”) announced a public enforcement action against a large captive auto finance company. **The enforcement action includes \$19.2 million in penalties and customer redress, representing a significant amount per impacted customer.** This enforcement action marked the first time the CFPB has required customer redress to individuals impacted by credit furnishing errors. With this enforcement action, the stakes of furnishing inaccurate information became higher than ever before.

The High Cost of Furnishing Inaccurate Credit Reporting Data

Furnishing credit reporting data – whether via Metro 2[®], AUD, or ACDV – includes its own unique set of challenges for every product type. Some of these challenges include:

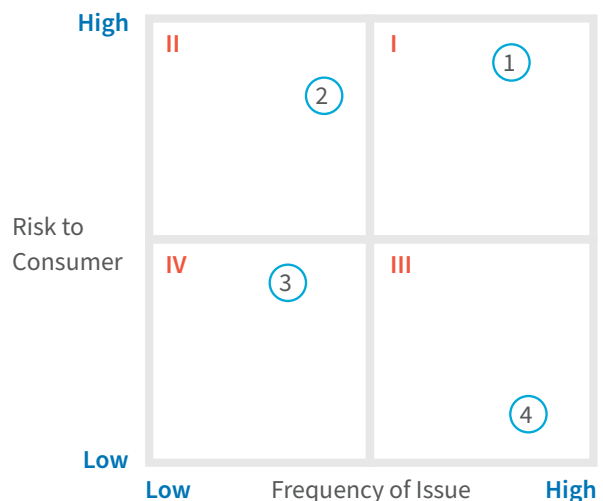
- Incorrect and inconsistent handling of fields for automobile leases that reach End of Term, including Special Comment;
- Inaccurate reporting throughout foreclosure process, including incorrect usage of Special Comment Codes (e.g., BO) and not properly updating Account Status;
- Failure to update system of record after responding to dispute with updated information, resulting in re-pollution of Metro 2[®] data;
- Inaccurate calculation of balloon payment amount;
- Reporting closed accounts more than three times after they are closed; and,
- Excessive rejection of furnished data from the Consumer Reporting Agencies (“CRAs”).



Example Issues

1. Key Metro 2[®] Field (e.g., “Payment History Profile”) is systemically calculated incorrectly
2. Key Metro 2[®] Field (e.g., “Account Status”) is manually updated incorrectly and appears to impact many accounts
3. Demographic Metro 2[®] Field (e.g., “Surname”) is inaccurate, caused by manually updated data
4. All businesses (ECOA Code “W”) furnished without a personal guarantor

Risk Quadrants of Example Issues



- I. Systemic issues that may have a high impact on a consumer’s credit
- II. Non-systemic issues that may have a high impact on a consumer’s credit
- III. Systemic issues that may have a limited impact on a consumer’s credit
- IV. Non-systemic issues that may have a limited impact on a consumer’s credit



Compliance with the Fair Credit Reporting Act (“FCRA”) has become a high-risk issue for financial institutions of all sizes due to increased regulatory scrutiny and enforcement actions. The CFPB’s decision to require redress to individual customers impacted by credit furnishing errors sets the precedent for costly future enforcement actions.

Our team includes **FCRA specialists** as well as **former CFPB examiners-in-charge** and the **former Deputy Chief Compliance Officer for Equifax Inc.** We can assist in solving FCRA compliance and data furnishing challenges through three core service offerings:



CURRENT STATE ASSESSMENT

- End-to-end evaluation of credit reporting processes including data furnishing and dispute response against industry best practices
- Review and enhancement of policies and procedures against regulatory expectations, including drafting end-to-end FCRA policies and procedures
- Development of tailored target operating models depending on an institution’s size and product portfolio



METRO 2® FILE ANALYSIS / EVALUDATA

- FTI Consulting’s proprietary data analytics tool, EvaluData, can be used to identify illogical conditions between fields, variances from existing business rules and extreme values of fields, both within a single file and across periods
- Creation of customized dashboards to monitor FCRA Key Risk Indicators (“KRIs”) related to both data furnishing and dispute responses



TRADELINE TESTING

- In-depth review of a sample of accounts from the servicing system to the Metro 2® File to help identify root causes of system logic and data discrepancies
- Recommendations on process improvements and controls to reduce future furnishing errors

— Representative Engagements



FCRA Assessment and CFPB Response

SITUATION

FTI Consulting worked with a captive auto lender to enhance its FCRA-related processes, respond to issues the CFPB identified during an examination, as well as provide further support as FCRA SMEs as requested.

ROLE

Our experts performed the following services:

- Supported CFPB PARR Letter, Supplementary Responses, and MRA responses through account testing, data analytics and documenting mitigating circumstances around the CFPB's findings
- Conducted a current state assessment of the lender's compliance with FCRA requirements
- Deployed EvaluData to assess the accuracy and integrity of the lender's Metro 2® files
- Conducted detailed tradeline testing and trained client resources to implement tradeline testing in house
- Drafted centralized policies and procedures to ensure adherence to FCRA 1022 CFR Appendix E

IMPACT

FTI Consulting's work led to the client avoiding an enforcement action from the CFPB and monetary penalties.

The root cause analysis performed around the account testing allowed the Lender to remediate issues with their reporting processes, accurately report customer account information and remediate deficiencies in their system for future updates.

Consent Order Experience

SITUATION

FTI Consulting's experts were engaged as the Independent Consultant for a company in CFPB Consent Orders that address issues pertaining to unfair, deceptive, or abusive acts or practices; the requirements of the Fair Credit Reporting Act; and debt collection matters.

ROLE

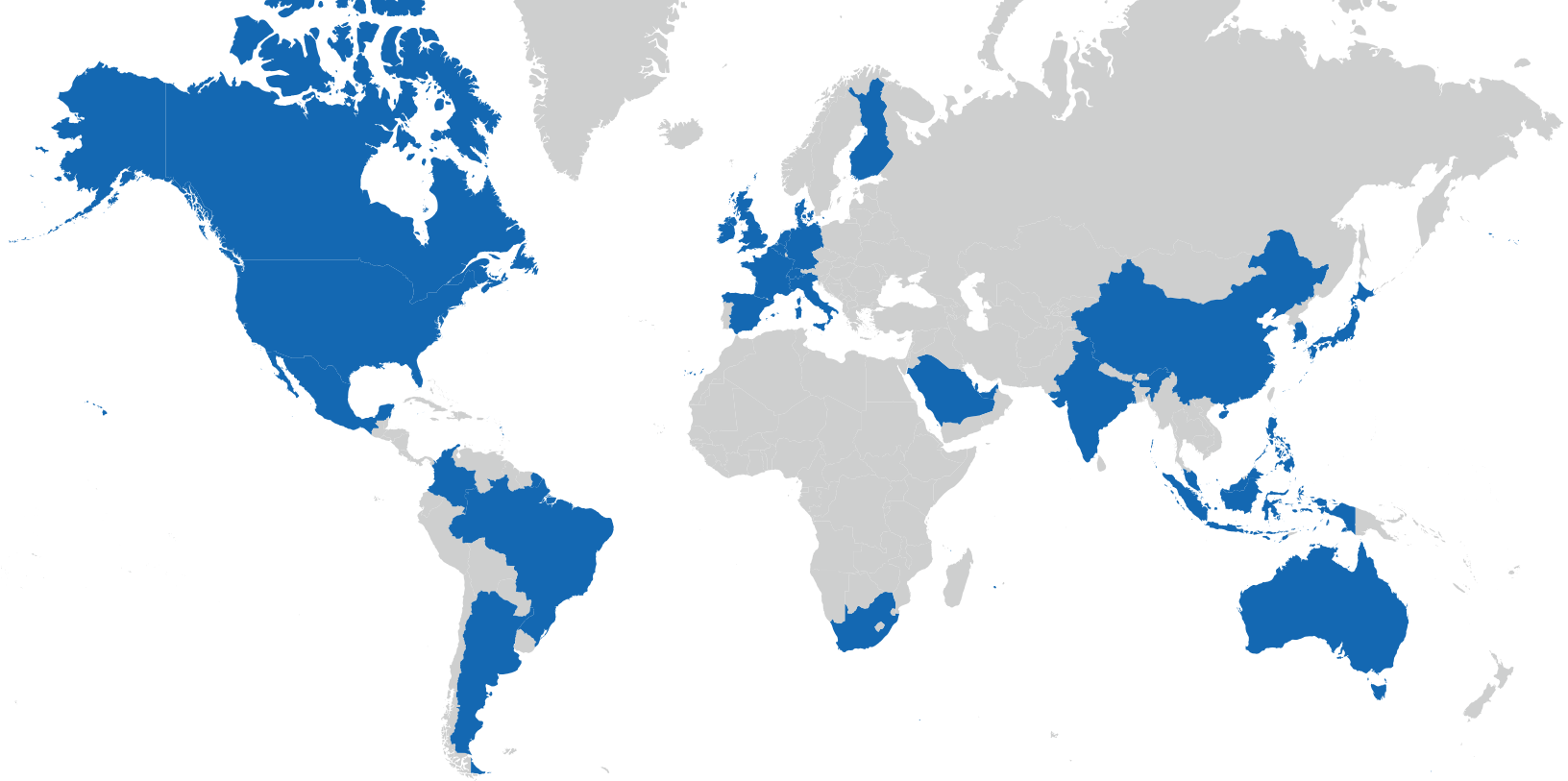
These engagements required an independent assessment of the company's compliance management systems, internal control systems and / or monthly compliance testing procedures.

As part of the engagements, accounts and tradelines were evaluated for systemic inaccuracies leveraging data analytics and tested on a sample basis to identify furnishing errors.

IMPACT

Independent reports were issued to senior management, board of directors and often provided to the CFPB.





EXPERTS WITH IMPACT™

With offices in every major financial center and every corner of the globe, we successfully serve our clients wherever challenges and opportunities arise.

Our clients include Fortune 500 corporations, FTSE 100 companies, global banks, major and local law firms and state and national governments and agencies in the U.S. and other countries. In addition, major U.S. and international law firms refer us or engage us on behalf of their clients.

31

Countries

1982

Year Founded

7,700+

Employees Worldwide

NYSE:FCN

Publicly traded

Top 50

Advisor to the world's top 50 bank holding companies

99/100

Advisor to 99 of the world's top 100 law firms

\$6.2B

Equity Market Cap*

82/100

82 of Fortune Global 100 corporations are clients

*Number of total shares outstanding as of April 20, 2023, by the closing price per share on April 20, 2023.

For further information, please contact:

STELLA MENDES

Senior Managing Director
+1 212 841 9363
stella.mendes@fticonsulting.com

DAVID KING

Senior Managing Director
+1 713 353 5432
david.king@fticonsulting.com

BADRI SRIDHAR

Managing Director
+1 212 651 7146
badri.sridhar@fticonsulting.com

TROY KUBES

Managing Director
+1 404 270 1458
troy.kubes@fticonsulting.com

The views expressed herein are those of the author(s) and not necessarily the views of FTI Consulting, Inc., its management, its subsidiaries, its affiliates, or its other professionals.

EXPERTS WITH IMPACT™

FTI Consulting is an independent global business advisory firm dedicated to helping organizations manage change, mitigate risk and resolve disputes: financial, legal, operational, political & regulatory, reputational and transactional. FTI Consulting professionals, located in all major business centers throughout the world, work closely with clients to anticipate, illuminate and overcome complex business challenges and opportunities. FTI Consulting, Inc., including its subsidiaries and affiliates, is a consulting firm and is not a certified public accounting firm or a law firm.

01272023 | VN02263-V06

www.fticonsulting.com



© 2023 FTI Consulting, Inc. All rights reserved.