

Economic Impact of Health

Analytics and Data to Support Opportunities for Improving Health, Equity & Economic Vitality

Economic prosperity and health are linked. Poor health challenges vitality and growth and reduces quality of life. Chronic conditions such as diabetes or hypertension contribute to increased utilization, medical and productivity costs, and losses for businesses and communities. Many business and civic leaders and local coalitions lack critical data to evaluate drivers, diagnose issues, set priorities and assess solutions and gains. The pandemic heightens urgency and opportunity for collective impact actions on health and health equity.

“Business leaders must look at healthcare not as a cost of doing business, but as an investment in their people and the future of the business.”

“In many communities, **broader coalitions** among business, civic and community leaders are already aligned to address the impact of the pandemic and are positioned to do more. Improving workforce health is in the best interest of us all. Targeted interventions of prevalent chronic conditions yield substantial benefits that can be scaled as needed. Innovative tools like healthcare dashboards that consolidate key current performance indicators and action items are starting to be deployed.”¹

FTI’s Center brings advanced economic modeling, research-based methods and validated data sources to inform our analyses and to assist clients proactively to assess drivers of poor health, their individual and collective impact at community level, and opportunities and benefits from action.

#1 Priority for CEOs

should be the physical health and well-being of their employees, per an FTI Consulting survey of more than 1,000 employed professionals.²

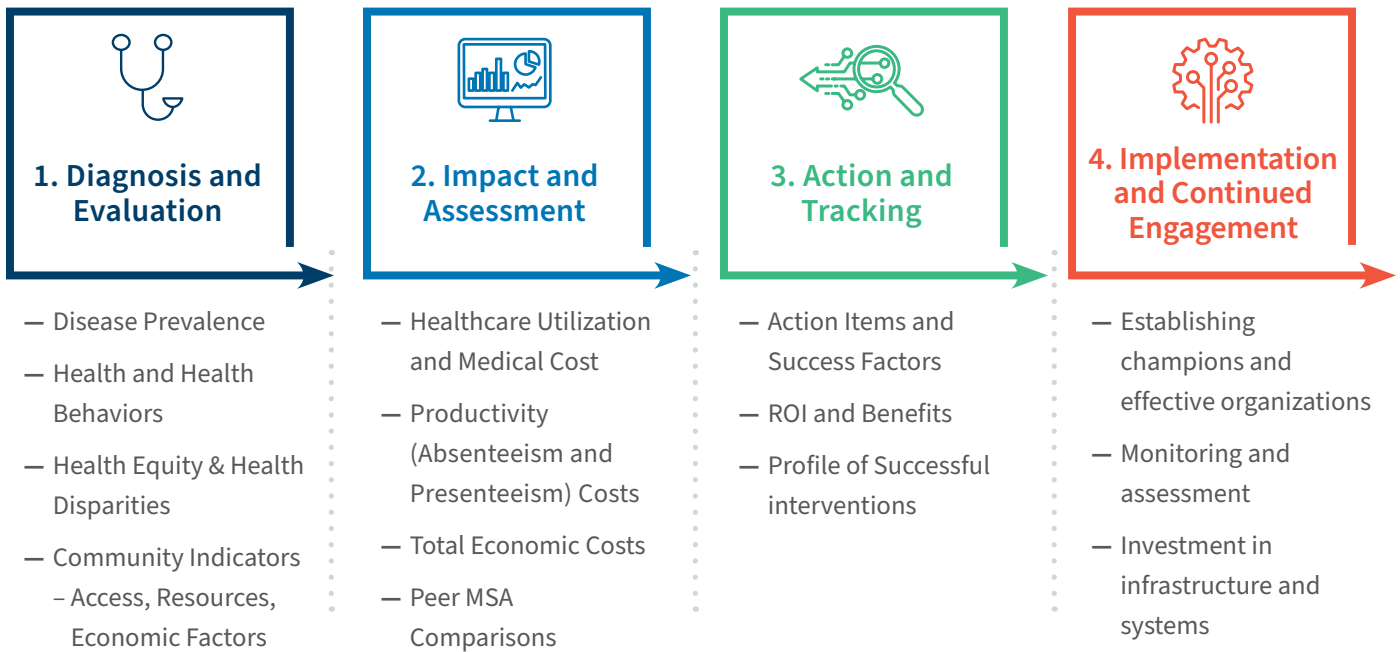


¹ “What Business Leaders Need to Know About the Benefits of a Healthy Workforce.” FTI Journal (2022).

² “CEO Leadership Redefined: Part 1 Survey.” FTI Consulting (2021).

The Center’s Analytical Framework for Collaborative Action

FTI Consulting’s Center has developed a research-based and staged framework using advanced economic modeling and supported by robust and actionable data to assist clients (business, collaboratives, health systems, health plans, government) to evaluate key health, health equity and impact issues in a community: What drives poor health? What is its impact? Which successful interventions/actions generate benefit? How do we implement solutions?



Regional Area Framework

FTI Consulting’s Center provides clients with customized dashboards with robust and replicable community-level data for each of these key domains to provide quantification and key performance indicators for evaluation, decision-making, accountability, tracking over time, and for comparing communities.

<p>Med. Costs/ Comm. Claims</p> <p>Merative™ MarketScan®</p>	<p>Prevalence/ Research</p> <p>CDC BRFSS</p>	<p>Economic Factors/ Productivity</p> <p>BUREAU OF LABOR STATISTICS</p>	<p>Life Expectancy</p> <p>IHME</p>	<p>Demographics/ Insurance</p> <p>AMERICAN COMMUNITY SURVEY U.S. CENSUS BUREAU</p>	<p>Food Insecurity</p> <p>County Health Rankings & Roadmaps Building a Culture of Health, Georgia's County</p>
--	--	---	------------------------------------	--	--



Urgency for Action

The COVID-19 pandemic heightens urgency and opportunity for collective impact actions by public-private partnerships in local communities for health and economic benefit.

The pandemic poses many challenges to our nation's communities, yet it has created shared value and enhanced awareness of each individual's connection to all others within a community. Multi-sector collaboratives with trusted community relationships and keen understanding of drivers of poor health have been able to develop and implement solutions for their communities. These can address not only COVID-19's impact, but make inroads into poor health, access, resources, and coordinated efforts to address health disparities and economic impacts.



For more information: <https://www.ftichep.com>

Center's Collaborative Examples



Nashville, TN | [Nashville Region Health Competitiveness Initiative Report](#)



Buffalo/Western NY | [The Economic Impact of Poor Health On Our WNY Community Report](#)



[Action Collaborative on Business Engagement in Building Healthy Communities-Faith, Community & Government - Health Collaboration to Address Health Disparities during the COVID-19 Pandemic Webinar](#)



[Health & Economic Impact of COVID-19 - Health Collaboration to Address Health Disparities during the COVID-19 Pandemic Webinar](#)

The views expressed herein are those of the author(s) and not necessarily the views of FTI Consulting, Inc., its management, its subsidiaries, its affiliates, or its other professionals.

MARGARET GUERIN-CALVERT

Senior Managing Director
202.589.3451
margaret.guerin-calvert@fticonsulting.com

DENISE H. CLAYTON

Managing Director
919.749.7163
denise.clayton@fticonsulting.com

FTI Consulting is an independent global business advisory firm dedicated to helping organizations manage change, mitigate risk and resolve disputes: financial, legal, operational, political & regulatory, reputational and transactional. FTI Consulting professionals, located in all major business centers throughout the world, work closely with clients to anticipate, illuminate and overcome complex business challenges and opportunities. FTI Consulting, Inc., including its subsidiaries and affiliates, is a consulting firm and is not a certified public accounting firm or a law firm. ©2022 FTI Consulting, Inc. All rights reserved. www.fticonsulting.com

09062022 | VN02001-v15